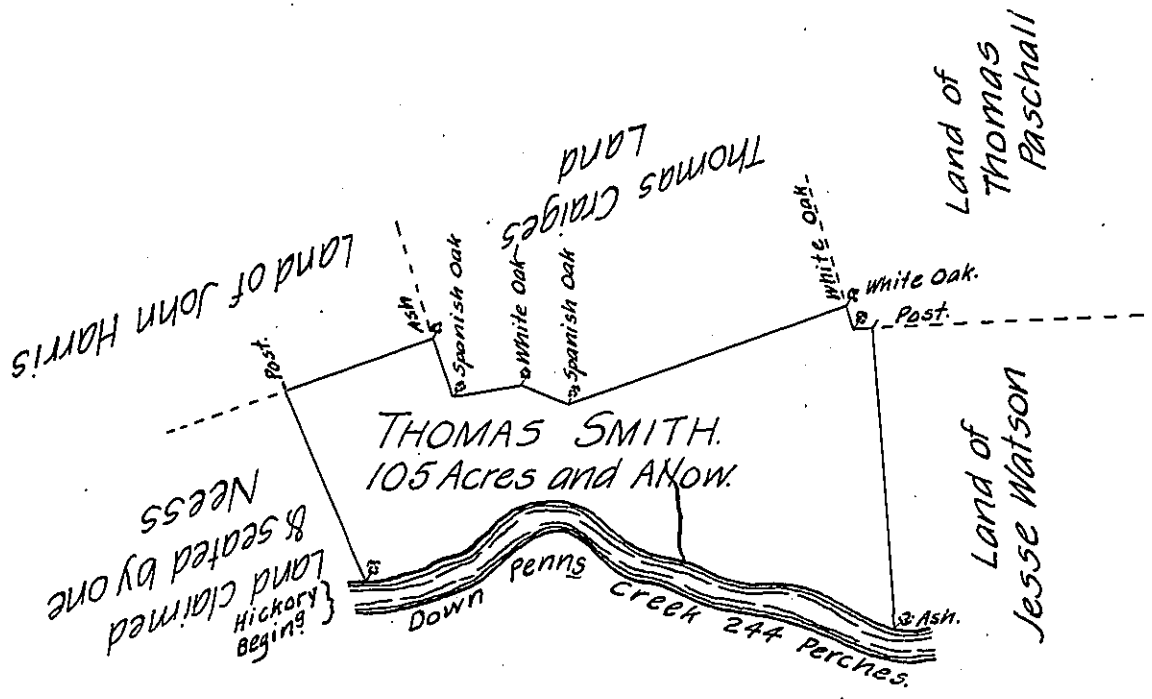


Courses and Distances }
Down Penns Creek }

- East 16
- N. 67. E. 30.
- N. 45 E. 22
- N. 88 E. 24
- S. 65. E. 18
- S. 43. E. 17
- S. 85. E. 14
- S. 67. E. 31
- S. 81. E. 36
- S. 67. E. 36
- 244 to Ash

- N. 5. W. 124 Post
- S. 80 W. 5 White Oak
- N. 22 W. 6 White Oak
- S. 71. W. 131 Spanish Oak
- N. 65 W. 19 White Oak
- S. 80 W. 30 Spanish Oak
- N. 18. W. 21 Ash
- S. 75 W. 70 Post
- S. 34. E. 72 Hickory Begⁿ



The Draught of a Tract of Land called 105¹/₂ Acre on the North Side
of Penns Creek in Buffaloe Township, Northumberland County, containing One
hundred Five Acres with the usual Allowance of Six Acres $\frac{1}{2}$ Cent for Roads

Survey'd the 12th day of August Anno Domini 1775, In Pursuance of a War-
rant from the Honble Proprietaries to Thomas Smith bearing Date at Philad^a
the 24th day of January Anno Dom. 1775.

Wm Maclay — —

To John Lukens, Esq^r }
S. G. of Pennsylvania. }

IN TESTIMONY that the above is a copy of the original remaining on file in
the Department of Internal Affairs of Pennsylvania, made
conformably to an Act of Assembly approved the 16th day of
February, 1833, I have hereunto set my Hand and caused
the Seal of said Department to be affixed at Harrisburg,
this ninth day of November 1906

George P. Brown
Secretary of Internal Affairs.